

## ELM

- mounting flange with Position switch
- 30 mm x 42 mm x 92 mm
- Thermoplastic enclosure

## Data

### General data

Enclosure material	Glass-fibre, reinforced thermoplastic
Gross weight	18 g

### Mechanical data

Tightening torque of the screw	0.6 Nm
--------------------------------	--------

### Mechanical data - Connection technique

Note (Cable section)	All indications including the conductor ferrules.
----------------------	---

### Mechanical data - Dimensions

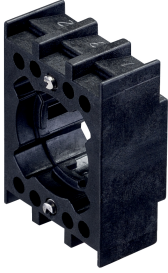
Width of sensor	30 mm
-----------------	-------

### Ambient conditions

Ambient temperature	-25 ... +80 °C
---------------------	----------------

## Pictures

## Product picture (catalogue individual photo)

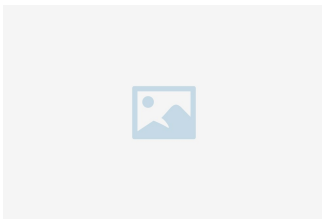


ID: kelm-f01

| 585.4 kB | .jpg | 352.778 x 463.55 mm - 1000 x 1314 px - 72 dpi

| 53.4 kB | .png | 74.083 x 97.367 mm - 210 x 276 px - 72 dpi

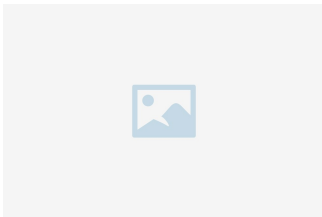
## Assembly example



ID: kelm-m01

| 25.6 kB | .cdr |

## Assembly example



ID: kelm-m02

| 22.4 kB | .cdr |

K.A. Schmersal GmbH & Co. KG, Möddinghofe 30, 42279 Wuppertal

The details and data referred to have been carefully checked. Images may diverge from original. Further technical data can be found in the manual. Technical amendments and errors possible.

Generated on: 29/05/2023, 09:17