



AZ08K

- Single wire entry (1 cable per clamp)
- Thermoplastic enclosure
- Contact pin in actuator bridge
- 1 Actuating planes
- Protection class IP20
- Inseparable cover and enclosure
- Enclosure with mounting slots
- Self-cleaning through the frictional movement of the contact bridges

Data

Approvals - Standards

Certificates TÜV

General data

Standards EN 81
Enclosure material Plastic, glass-fibre reinforced thermoplastic, self-extinguishing
Gross weight 27 g

General data - Features

Suitable for elevators Yes
Number of safety contacts 1

Mechanical data

Actuating panels 1
Mechanical life, minimum 1,000,000 Operations

Actuating stroke	5 mm
Actuating force, approx.	2 N
Mounting	Enclosure with mounting slots

Mechanical data - Connection technique

Termination	Screw terminals M 3
Cable entry	Single conductor version with connecting funnel
Cable section, minimum	0.75 mm ²
Cable section, maximum	2.5 mm ²
Note (Cable section)	All indications including the conductor ferrules.

Mechanical data - Dimensions

Width	73.5 mm
Height	27 mm
Depth	21.5 mm

Ambient conditions

Degree of protection	IP20
Ambient temperature	-30 ... +80 °C

Ambient conditions - Insulation values

Rated insulation voltage U_i	500 V
--------------------------------	-------

Electrical data

Thermal test current	4 A
Utilisation category AC-15	230 VAC
Utilisation category AC-15	2 A
Utilisation category DC-13	200 VDC
Utilisation category DC-13	2 A
Switching element	Opener (NC)

Switching principle

Self-cleaning pressure contact

Material of the contacts, electrical

Silver-plated Cu rivets

Scope of delivery

Scope of delivery

Actuator must be ordered separately.

Pictures

Product picture (catalogue individual photo)



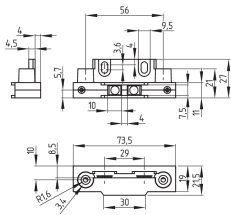
ID: kaz08f01

| 8.1 MB | .tif | 145.796 x 68.749 mm - 1722 x 812 px - 300 dpi

| 255.6 kB | .jpg | 352.778 x 166.511 mm - 1000 x 472 px - 72 dpi

| 19.6 kB | .png | 74.083 x 34.925 mm - 210 x 99 px - 72 dpi

Dimensional drawing basic component



ID: 1az08g01

| 34.6 kB | .cdr |

| 4.8 kB | .png | 74.083 x 51.506 mm - 210 x 146 px - 72 dpi

| 109.5 kB | .jpg | 352.778 x 245.181 mm - 1000 x 695 px - 72 dpi

K.A. Schmersal GmbH & Co. KG, Möddinghofe 30, 42279 Wuppertal

The details and data referred to have been carefully checked. Images may diverge from original. Further technical data can be found in the manual. Technical amendments and errors possible.

Generated on: 26/05/2023, 12:56